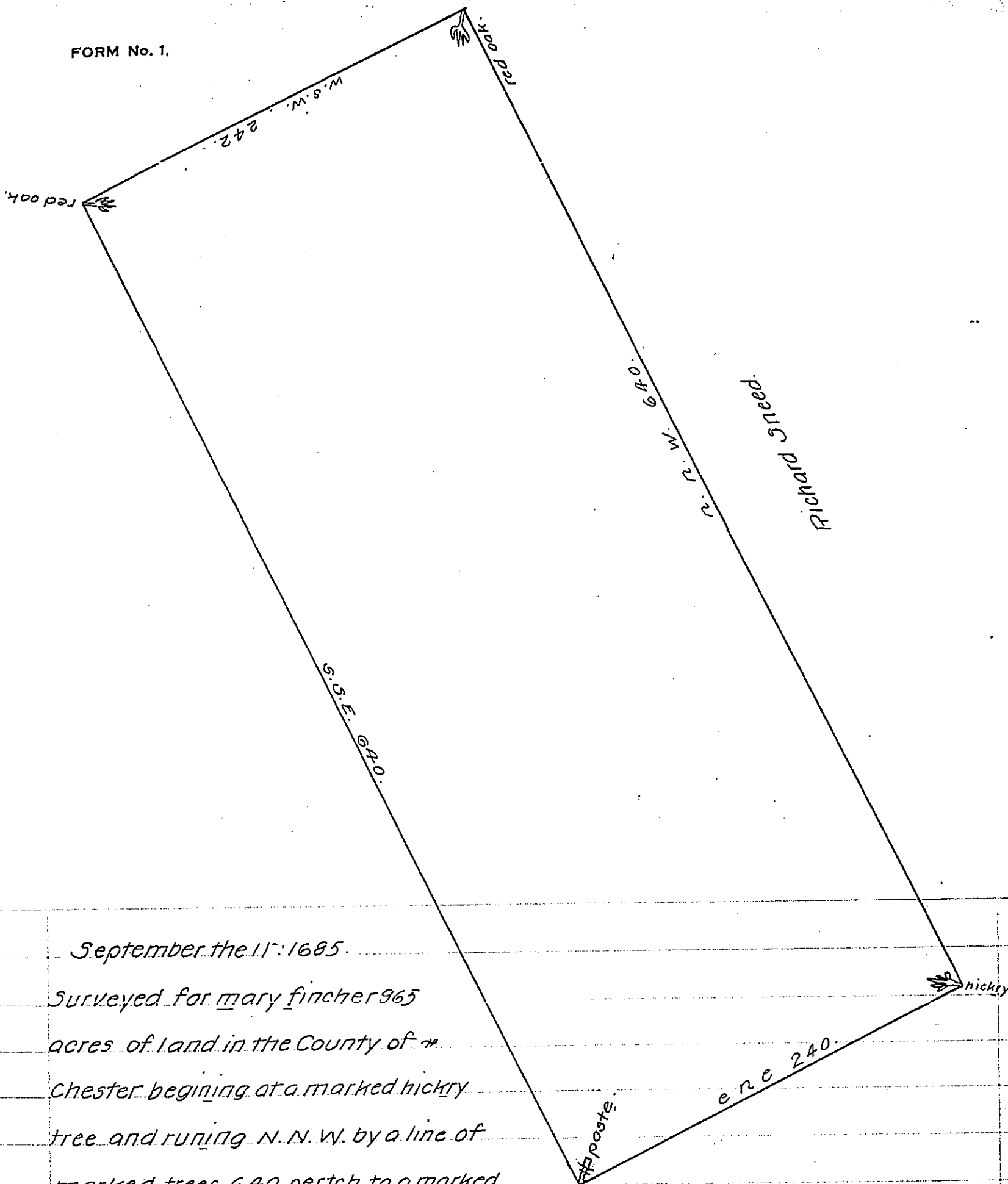


FORM No. 1.



September the 11: 1685.
 Surveyed for Mary Fincher 965
 acres of land in the County of
 Chester begining at a marked hickry
 tree and runing N. N. W. by a line of
 marked trees 640 pertch to a marked
 red oak and from thence runing (obliterated) ertch (obliterated)
 a marked red oak from thence runing runing S.S.E. by a line of marked trees
 640 pertch to a marked poste and from thence runing E.N.E. by a line of mark-
 ed trees of 242 pertch to the first manchened hickry.

By Charles Ashcom.

IN TESTIMONY that the above is a copy of the original remaining on file in
 the Department of Internal Affairs of Pennsylvania, made
 conformably to an Act of Assembly approved the 16th day of
 February, 1833, I have hereunto set my Hand and caused
 the Seal of said Department to be affixed at Harrisburg,
 this eleventh day of November, 1909

Henry Horch
 Secretary of Internal Affairs.